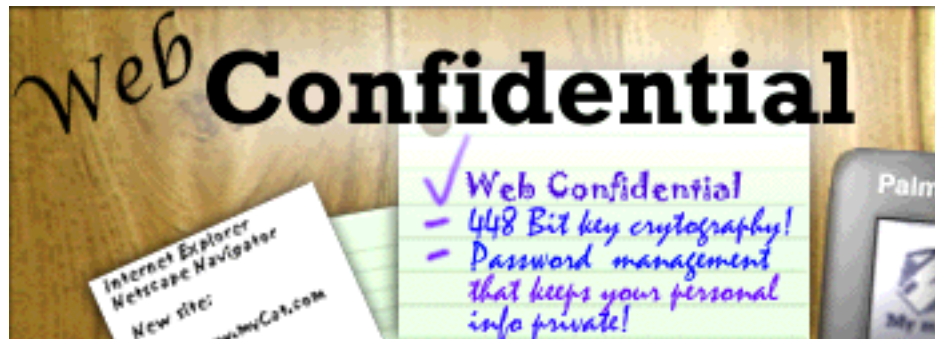


Web Confidential™

for Windows

User's Guide

Version 2.0



WWW: <<http://www.web-confidential.com>>
E-Mail: <<mailto:win@web-confidential.com>>

Copyright, © 1999-2000 Arno Stobbe and Alco Blom
All Rights Reserved

Product design by
Alco Blom
<<mailto:support@web-confidential.com>>

Software written by
Arno Stobbe
<<mailto:win@web-confidential.com>>

Encryption algorithm
Bruce Schneier
<<mailto:schneier@counterpane.com>>

Original manual written by
Colin Brace
<<mailto:cbrace@lim.nl>>

Contents

1. Introduction	4
2. Requirements	5
3. The Concept Of Shareware	6
4. Getting Started	7
5. File Encryption	17
6. Categories	18
7. Reference	20
8. Command Key Shortcuts	36

Introduction

by Alco Blom & Arno Stobbe

If you are anything like us, you've probably got a growing number user IDs, passwords, registration keys, PINs, serial numbers, and the like, stored in various places on your PC or scribbled on miscellaneous pieces of paper around your home or office. When you stop and think about it, you probably have more of these pesky bits of information scattered about than you realize.

The proliferation of the Internet is exacerbating this situation. Increasing numbers of commercially-oriented sites, such as the NY Times, require some form of registration even simply to view content. Other transaction-oriented sites, such as Amazon.com, or personalized sites, such as My Yahoo, require passwords for personal services. Many sites now use cookies to track users, but if your cookies files get deleted or corrupted, you'll have to re-enter your usernames and passwords.

We decided to write a software program to manage passwords and the like; it is called **Web Confidential**. It uses an intuitive, easy-to-use card-file metaphor which will enable even novice users to get up to speed in no time.

Last but not least, Web Confidential permits you to encrypt your password files, protecting this sensitive information from prying eyes, using the state-of-the-art “Blowfish” algorithm¹. The Blowfish algorithm was published four years ago, and has been proven extremely resilient to cracking. No known succesful cryptanalysis against Blowfish exists. Web Confidential supports keys of up to 448 bits in length.

¹ Applied Cryptography, Bruce Schneier, 1996. John Wiley & Sons, Inc.
(see also <<http://www.counterpane.com>>)

Requirements

Web Confidential runs in 600 Kb of RAM. The application size is around 560 Kb. Including documentation, Web Confidential requires around 1.0 Mb of harddisk space.

Web Confidential runs on the operating systems Windows 95/98/NT/2000. Web Confidential is also available for Palm and Macintosh.

After unpacking the Web Confidential ZIP file, you will have a new folder called Web Confidential 2.0. To use Web Confidential, just launch the application.

Limitation of Liability

Under no circumstances including negligence, shall Alco Blom or Arno Stobbe be liable for any incidental, special or consequential damages that result from the use or inability to use Web Confidential, even if Alco Blom and or Arno Stobbe has been advised of the possibility of such damages.

Mailing List

Web-Confidential-Windows-Talk is a mailing list dedicated to the discussion of Web Confidential for Windows. The authors of Web Confidential participate on the list and provide support. To subscribe to Web-Confidential-Windows-Talk:

Send a message to:	requests@web-confidential.com
Start the body with:	subscribe Web-Confidential-Windows-Talk

The Concept Of Shareware

Web Confidential is distributed under the so-called “shareware” principle. This means that you are expected to pay a modest registration fee of \$20 if you continue to use the program beyond a trial period of 30 days. Within this trial period, you have full access to all of Web Confidential's features. After thirty days of use, you cannot add new cards but you can continue to view and edit existing cards. Upon payment of the registration fee, you will be issued a registration key which removes these restrictions. Payment of the registration fee entitles you to all subsequent incremental upgrades. In addition, the wishes of registered users will be taken into account in future enhancements of the program.

Although freely distributed via the Internet and on CD-ROM collections, Web Confidential is not public domain software; it is commercial software, which is professionally developed and supported. It represents many hours of work by its developer, whose primary source of income is derived from the development of shareware software for the PC & Mac. Your registration payment ensures the continued viability of high-quality software developed by independent developers.

We trust that you will honor the shareware concept and register Web Confidential if you continue to use it.

To encourage you to pay the shareware fee, the unregistered version of Web Confidential has the following restrictions:

The unregistered version has a limit on the amount of cards you can add to a file. This limit is set to 25 cards.

After 30 days of use, you cannot add any new cards to your files. However, you can still view and edit your existing data.

After you register the program, these restrictions are removed.

Web Confidential costs \$20. You can register on the WWW using this URL:

[<http://order.kagi.com/?AB&S>](http://order.kagi.com/?AB&S)

Palm and Macintosh versions of Web Confidential are also available. You can download them from the WWW. Please go to: [<http://www.web-confidential.com>](http://www.web-confidential.com)

Getting Started

The Getting Started section contains a brief tutorial to help you get up to speed quickly using Web Confidential. In it, you will be introduced to the following topics:

[Creating Web Confidential cards directly](#)

[Adding a card from within your Web Browser](#)

[The categories and fields of Web Confidential cards](#)

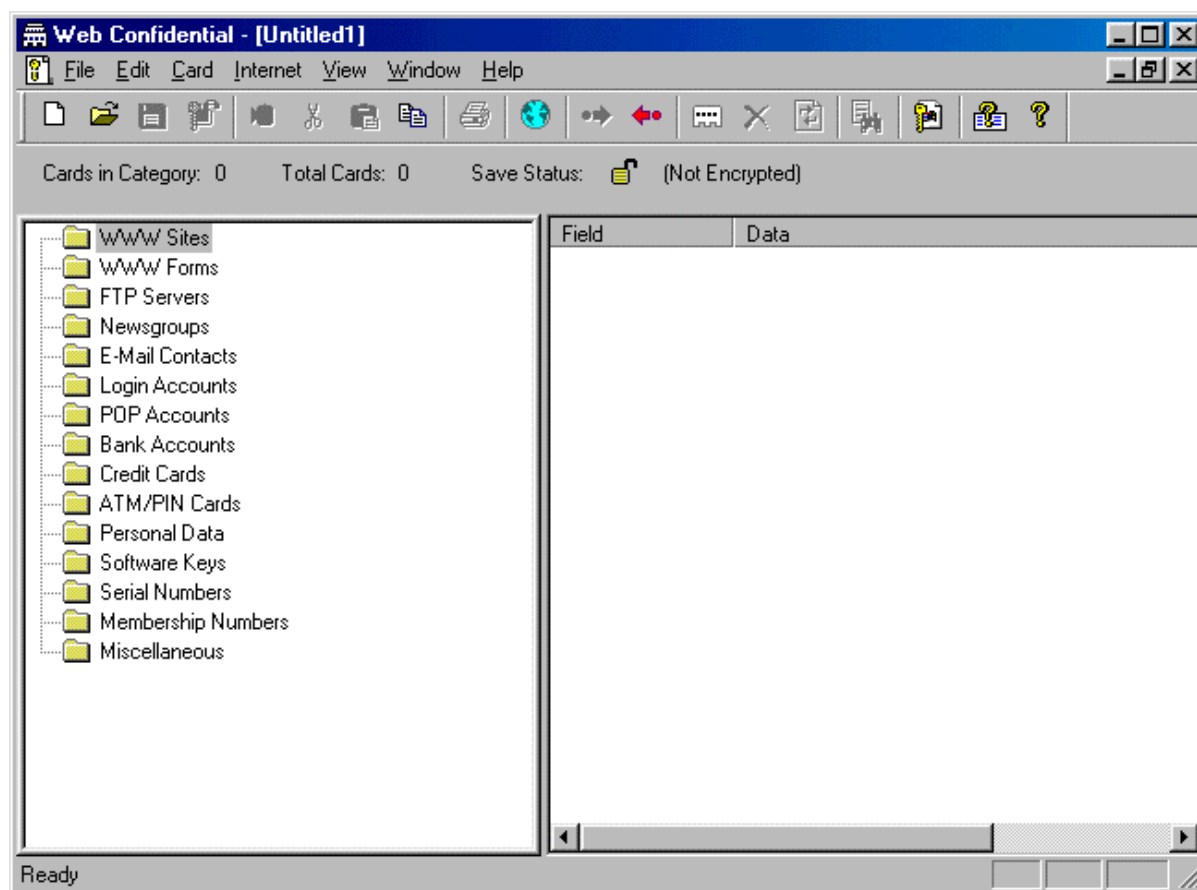
[The Web Confidential toolbar](#)

[Launching a password-protected page](#)

Creating Web Confidential cards directly

To add cards directly in Web Confidential, proceed as follows: open the Web Confidential folder on your hard disk and double click on the Web Confidential icon to start the program.

You will be presented with an empty file (see picture below). Your new password file will be assigned the default name “Untitled1”.



Create a Card

Let's start by creating a card for your Internet Service Provider (ISP) account. This is the company or organization with which you have an account for Internet access. Typically, you were issued an username and password when you opened your account. We will now create a Web Confidential card containing this information.

By default, Web Confidential displays a card structured for a World Wide Web (WWW) page address. This means that each of the four fields is labeled appropriately for a Web page address.

To select a different category of card, click the card category in the list with the available categories - it currently displays “WWW Pages”.

Select “Login Accounts”. A “Login Account” card is the appropriate card type for storing the details of your ISP account.



Click on the Add button in the toolbar.

In the field Name, enter the name of the ISP. In the field Host, enter the name of the host as a Telnet address.

In the field Login, enter your username. Do not confuse this with your real name; your username will be one word with no spaces. It is usually a combination of letters from your first and last name. It is usually not case sensitive.

In the field Password, enter your password. Keep in mind that in contrast to your username your password is almost certainly case sensitive; remember to enter exactly as it was issued by your ISP.

Notice that your password is not displayed as you type, but rather asterisks are substituted for each letter. This is for reasons of confidentiality, namely to prevent an onlooker from being able to see your password.

To ensure, however, that you have indeed entered your password correctly, you can view it by clicking on the Eyeglasses icon next to the Password field. This will display your password in a window.

You have now created your first Web Confidential card.

Card Information

As you can see, at any time all the available categories are shown as folders in a tree view which is common in many applications. When a card is added to a specific folder, this can be seen as a (+) mark just before the folder, again the same way as in the Windows Explorer program. In general a (+) means that a folder contains one or more items.

If you double click on a folder, the folder opens and shows how many items it contains. In our case there is just one item, the card we just added. Next, if you want to know more information about the card you just added, you just click on the card and the information the card contains, is shown in the right part of the main Window.

Save To Disk

Before you go any further, take a moment to save this password file to disk. Click the Save button from the toolbar. The Save File dialog will prompt you for a filename for your password file. The Web Confidential default is “WebConf 1”; presumably you will want to change this to something more meaningful to you. Once you have given your Web Confidential password file a distinctive filename, simply clicking the Save button periodically will save changes to your password file as you work. Or use the “Auto Save Option” in the preference menu.

Adding a card from within your Web Browser

One of the outstanding features of Web Confidential -- one that sets it apart from simple card file programs -- is its tight integration with your Web Browser. As you will see below, Web Confidential can send an URL to your Web Browser, meaning you don't have to Cut and Paste information manually -- Web Confidential handles this chore automatically. But this integration doesn't stop there. Web Confidential can also receive information from your Web Browser. You can in fact add a card which takes the name and Internet address of the current Web Page with a single keystroke.

To add a card from within your Web Browser, proceed as follows: first, make sure Web Confidential is running. Then start your Web Browser (for many people this will be either Netscape Navigator or Internet Explorer; Web Confidential works with both programs.)

Now, open a Web Page in your Web Browser, perhaps one you've saved in your Bookmarks or Favorites list. Switch to Web Confidential. Go to the Web Confidential toolbar and click on the button Get Web Page or go to the Internet Menu and choose the menu item Get Web Page. The New Card dialog will appear. Web Confidential copies the title of the Web Page to the Name field and copies the Internet address to the URL field.



Edit Card

Selected Category: WWW Pages

Card Info

Name: Web Confidential Site

URL: http://www.web-confidential.com

User ID:

Password:

Note:

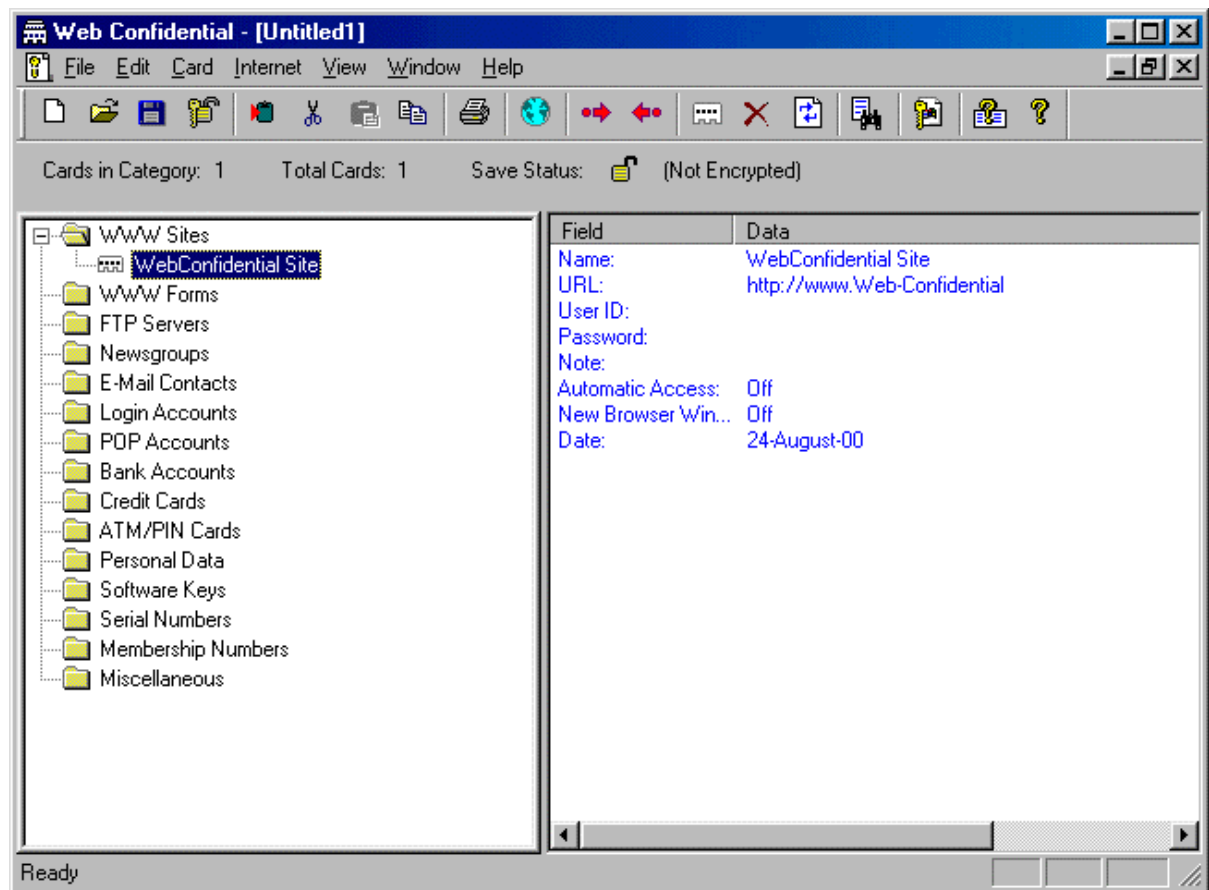
Attributes

☐ New Browser Window ☐ Automatic Access

OK Cancel

You can modify the card information as required. Next just click the Add Card button. This Web Page has now been added to your current Web Confidential password file.

The card you just added will be displayed in the selected category folder (in this example: WWW Sites).



On the left side of the main window we see the category folders with the card added (in our case the card is called Web Confidential) and on the right side we see some information the card contains; Date, Name, URL etc.

The categories and fields of Web Confidential cards.

If Web Confidential is not open, click on the program icon to launch it. Next, use the Open command under the File Menu to open the password file you created in the previous section. Once you have reopened your Web Confidential password file, take a minute to examine the popup menu used for selecting a category in Web Confidential.

Web Confidential offers you fourteen different types of cards, each with corresponding fields. When you select a different category, the field names change accordingly. Instead, for example, of a password field, the ATM/PIN Card Category has a PIN code field.

In designing Web Confidential, we have tried to anticipate your needs for defining the fields for each of the various categories. However, it is quite possible that you may want to store additional information for a given card. To anticipate this situation, we included a note field.

To view a note field, double click on the item “note:” in the Card Info part of the main window, a dialog Box appears which displays the contents of the note. To edit a note field you just double click on the card in the category folder and the Edit card window appears, you can edit the note field accordingly. A note can be of unlimited length.

The Web Confidential toolbar

Now let's turn to the toolbar. The most important functions for manipulating cards have been assigned buttons on the toolbar. We have already seen the Save and Add buttons. The remaining buttons include the following:



The Launch Browser button is useful, but it is not nearly as powerful as the Load Web Page button directly to the right.



The Load Web Page button expands upon the functionality offered by Launch Browser button by going directly to the URL specified in the second field. It does this by starting the appropriate application and supplying it with this URL.



For example, to create a WWW Page card using an URL from your bookmark file or any other source. First select WWW Pages from the Category popup menu. Then click Add Card button. The following card dialog will appear on the screen.

A screenshot of the 'Add New Card' dialog box. The dialog has a title bar 'Add New Card' with a close button. Inside, there is a section 'Selected Category: WWW Pages' with a speech bubble icon. Below this is a 'Card Info' section with five fields: 'Name' (containing 'James Bond Secrets'), 'URL' (containing 'http://www.web-confidential.com/bond'), 'User ID' (containing 'james'), 'Password' (containing 'xxxx'), and 'Note' (an empty text area). To the right of the 'URL' and 'Password' fields are small icons of a pencil and a key respectively. At the bottom of the dialog is an 'Attributes' section with two checkboxes: 'New Browser Window' and 'Automatic Access', both of which are unchecked. At the very bottom are two buttons: 'Add Card' and 'Cancel'.

Now fill in the first two fields as you see fit. (The third and fourth fields, User ID and Password, you can leave blank.) When you are done, click Save. Now, click on the Load Web Page button. If your Web Browser is not currently open, it will be opened with the URL in the second field of the card as the URL destination. If your Web Browser is already open, this URL will be passed to it. In either case, your Web Browser will then try to load this page.



The fifth button from the left, the Copy Password button, allows you to copy a password to the clipboard and paste it into another application. This saves you having to enter your password manually.

For example, create a card in the Password Manager category. This might be the password you use to access your personal account information on a site like Amazon.com. First select Password Manager from the Category popup menu. Then click Add. Now fill in the first and last fields as you see fit. When you are done, click Save. Now, click the Copy Password button. The contents of the last field will be copied to the Clipboard. If you switch to your Web Browser and position the cursor in the password field of an on screen WWW form, you can use the Paste command from the Edit Menu to paste your password into this field.



The Encrypt On Save button allows you to encrypt your Web Confidential password file. Pressing the Encrypt On Save button shows the dialog shown below.

The Encrypt On Save dialog allows you to encrypt your Web Confidential password file. It allows you to enter a passphrase or key for the file. When you enable the checkbox “Encrypt On Save”, your data will be encrypted when the file is written out to disk. Please review carefully the “Encrypting Password Files” section at the end of this document before using this feature.

Launching a password-protected page

You will find that Web Confidential really shines when it comes to handling password-protected Web Pages. See how Web Confidential can automate logging into a password-protected Web Page by trying this: add a new Web Page card to your password file. Here is an URL for a page that is password-protected:

<http://www.web-confidential.com/bond/>

Now enter in the User ID field:

james

and in the Password field:

bond007

Don't forget to enter a name in the first field; let's call it: James Bond Secrets.

Also enable the attribute “Automatic Access” (see picture below).



You can now launch this page directly by clicking the Load Web Page button in the Toolbar. Web Confidential automates the authorization process for you, making viewing password-protected pages as easy as unprotected ones.

Add New Card

Selected Category: WWW Pages

Card Info

Name: James Bond Secrets

URL: <http://www.web-confidential.com/bond/>

User ID: james

Password: xxxx

Note:

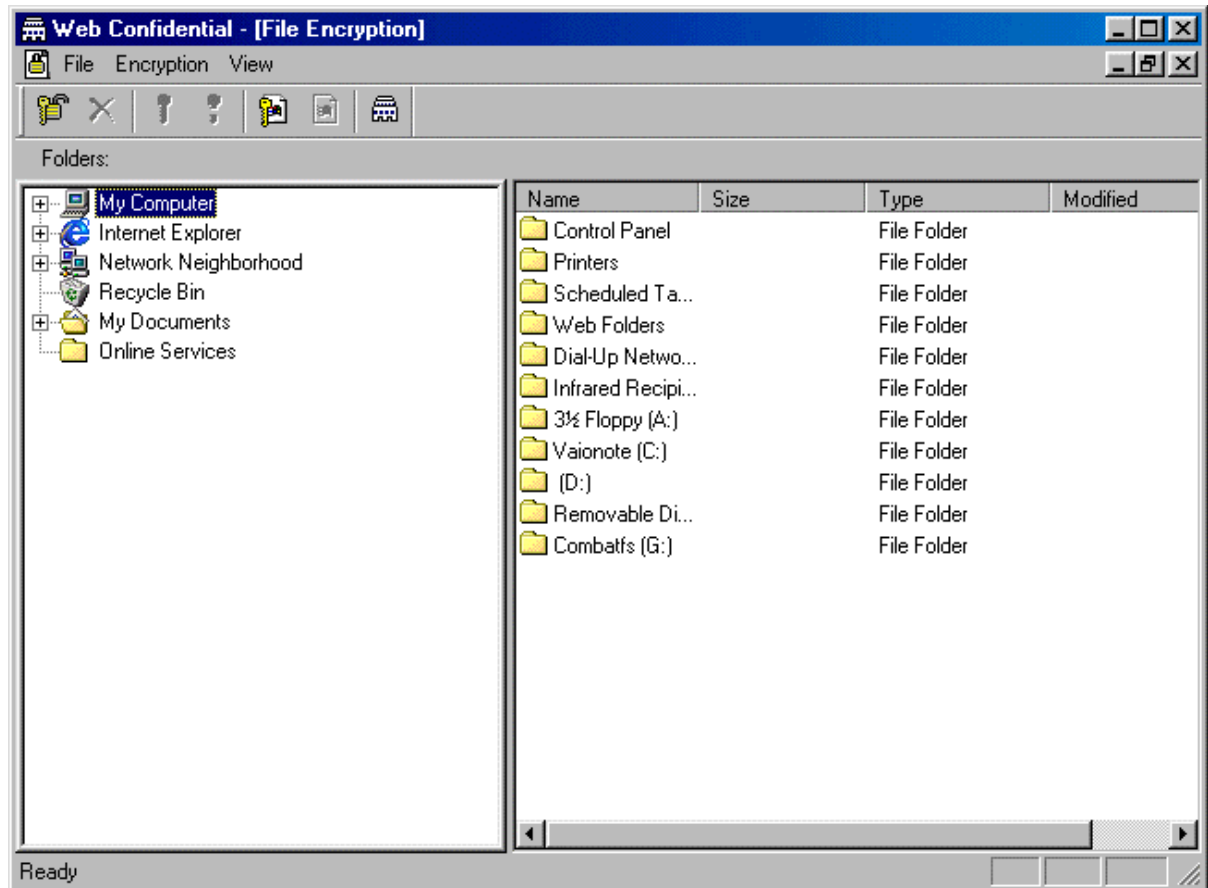
Attributes

☐ New Browser Window ☒ Automatic Access

Add Card Cancel



The **File Encryption** button switches to the “exploring view” of Web Confidential, in which you can select a file to encrypt. This feature gives you the ability to encrypt any file at will.



For this view the Toolbar has changed into the File Encryption Toolbar, which has less buttons and handles actions for encrypting files.



This concludes the Getting Started with Web Confidential section. By now, you have been acquainted with the main features of Web Confidential. You can explore the program further on your own or use the Reference section to learn about additional specific features.

File Encryption features

Web Confidential 2.0 has the ability to encrypt any file with a password. So, when you encrypt for instance a text file, after encryption the text file will not contain any useful information anymore, because all the information is encrypted. By decrypting the file the information will be available again, but only for the one who knows the password.

Important: If you forget the password you can not access the information anymore!

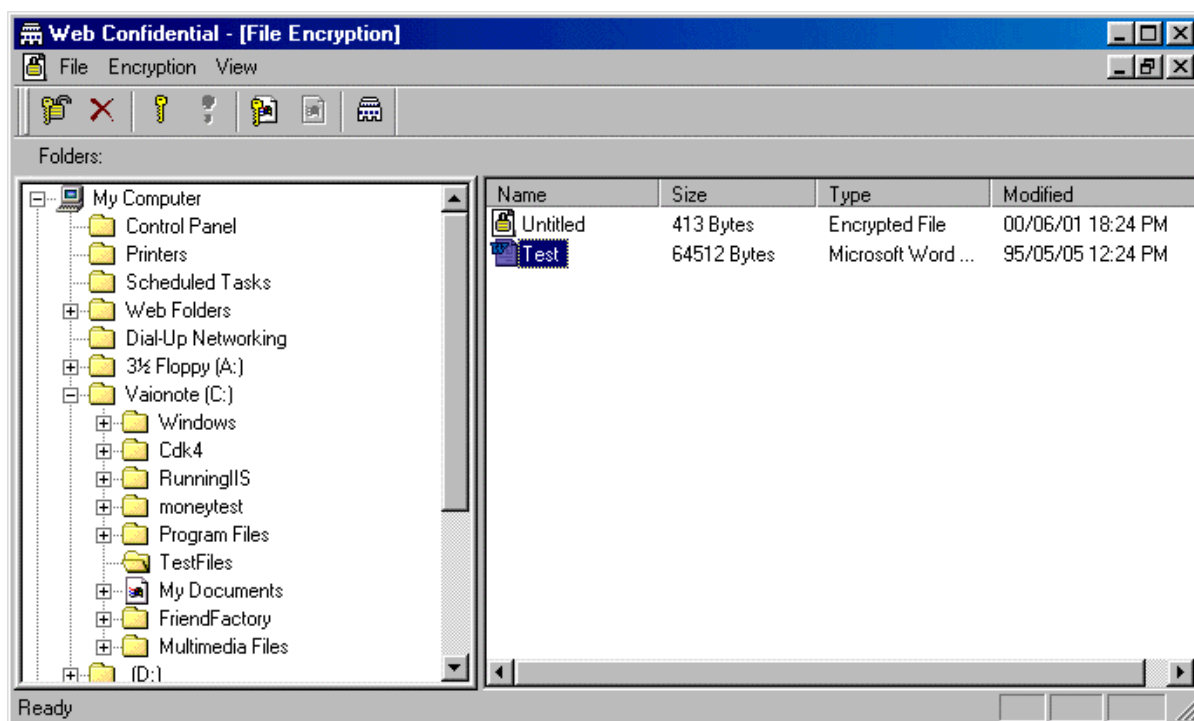
Encrypting a File

How does the file encrypting work? This is done quite easy.

Step 1. We set the password for the file Encryption. Do not forget this password!
By clicking on the Set Password button.

Step 2. We search for the file on the hard disk (or on any data carrier) and select the file.

Step 3. Click on the Button; Encrypt File (or the menu item File –Encrypt File) and the file is encrypted.



Categories

There are fourteen categories in Web Confidential:

WWW Sites, WWW Forms, FTP Servers, Newsgroups, E-Mail Contacts, Login Accounts, POP Accounts, Bank Accounts, Credit Cards, ATM/PIN Cards, Personal Data, Software Keys, Serial Numbers, Membership Numbers, Password Manager and Miscellaneous.

With regard to the WWW, you can use the categories “**WWW Sites**” and “**WWW Forms**”.

There are two types of Password Protected Web Sites. One type uses HTTP Authentication to gain access to a web site. You will know if the site is using HTTP Authentication because when you try to bring up the site, a dialog box will appear asking you for specific password information. Please store this information in the “WWW Sites” category. The other type of Password Protected Site asks for a password via a web form. Therefore, you would actually enter your information into a web page rather than a dialog box. Store these passwords in the category “WWW Forms”.

In “**FTP Servers**” you store your user ID and password to get access to password-protected FTP Servers.

In “**Newsgroups**” you store your user ID and password to get access to password-protected newsgroups.

In “**E-Mail Contacts**” you store e-mail addresses of personal contacts.

In “**Login Accounts**” you store information you need to access the various UNIX and PPP accounts at ISP (Internet Service Providers) you have.

In “**POP Accounts**” you store the passwords you need to retrieve mail from your various mailboxes.

In “**Bank Accounts**” you store the bank numbers you have.

In “**Credit Cards**” you store the numbers and expiration dates of your credit cards.

In “**ATM/PIN Cards**” you store the numbers of your ATM/PIN cards.

In “**Personal Data**” you store data like your drivers license, your insurance policy, your social security number.

In “**Software Keys**” you store all the registration numbers or software keys that you have received after registering software programs.

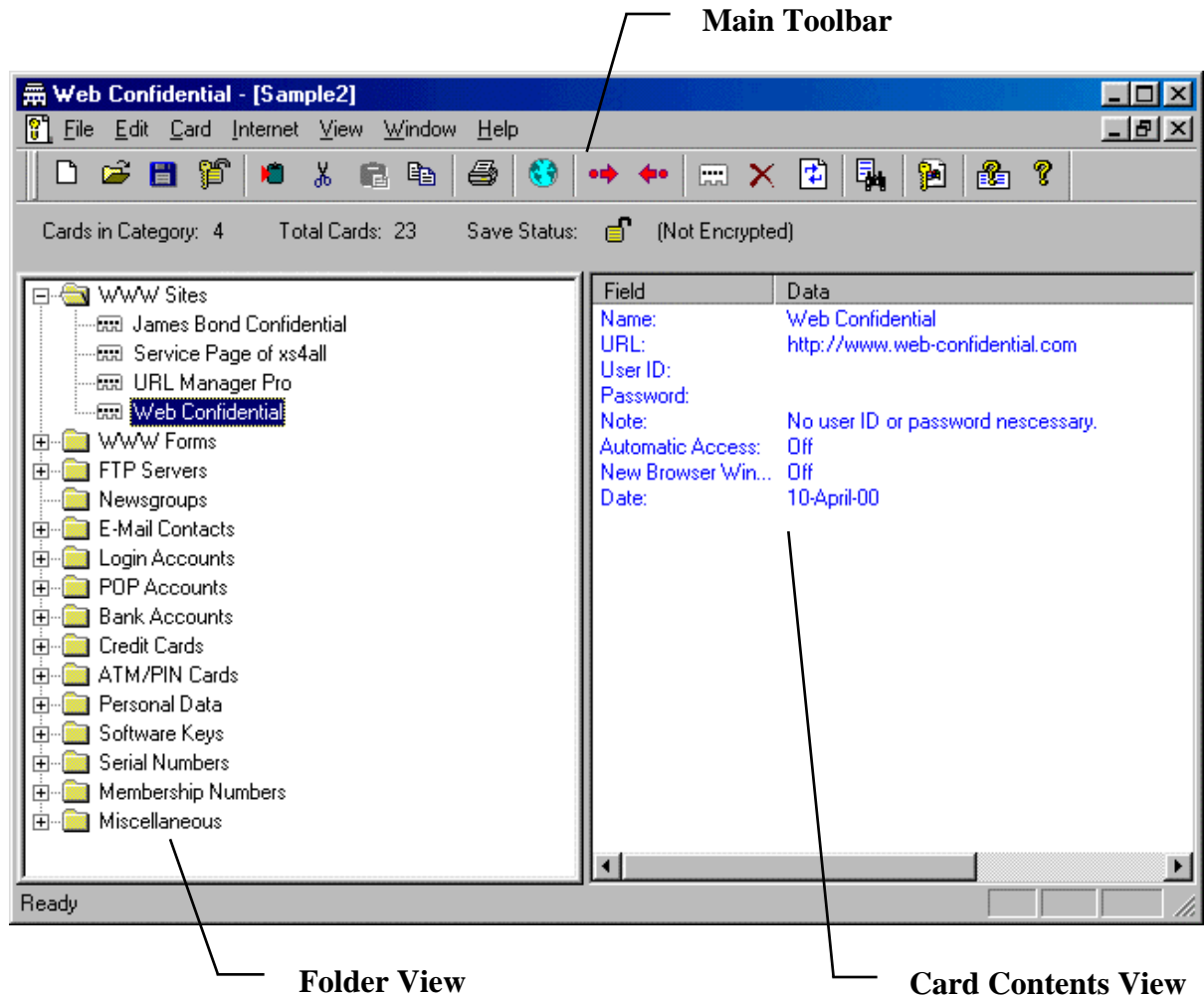
In “**Serial Numbers**” you store the serial numbers of various equipment that you have in the house. The serial numbers of your VCR, TV, HIFI, Laptop and PC. You might need them if they ever get stolen.

In “**Membership Numbers**” you can store various identification numbers that you receive after you join an organization or group.

Reference

Web Confidential Main Window

The main window of Web Confidential comprises the following elements (from top to bottom): a toolbar, the statusbar, and the main window view, which is split into two parts; on the left side you see all the available category folders and on the right side you see the information the selected card contains.



Web Confidential Toolbar

The Web Confidential toolbar comprises the following buttons, which offer quick access to the main features of the program. They are described from left to right.



File New

Creates a new Web Confidential file



File Open

Opens an existing Web Confidential file



Save File

The Save button saves your data to disk. Depending on the setting “Encrypt On Save” (that you can set via the Encrypt On Save button), the file is saved unencrypted or encrypted.



Encrypt On Save

The Encrypt On Save button allows you to encrypt your Web Confidential password file. It allows you to enter a passphrase or key for the file. When the file is written out to disk, it will be encrypted. Please review carefully the “Encrypting Password Files” section at the end of this document before using this feature.



Copy Password

The Copy Password button allows you to copy a password to the Clipboard and paste it into another application. This saves you having to enter your password manually. It also shields the password from view for the sake of confidentiality.



Cut

With this feature you can cut a selection and put in the clipboard



Paste

You can paste the information from the clipboard



Copy To Clipboard

Copy information to the Clipboard



Print File

Print Web Confidential File



Launch Browser

Launch your preferred Web Browser



Get Web Page

The command Get Web Page enables you, with just one mouse click (or keystroke), to create a new card in Web Confidential, containing the name and address of the current Web Page. It copies the title of the current Web Page into the name field and copies the Internet address to the URL field.



Load Web Page

The Load Web Page button is similar to the Launch Web Browser, but launches the Web Browser with the URL specified in the second field of the currently displayed card. If the application you select is already open, this URL will be passed to it and the application will try to open this page in its currently active browser window.



Add Card

The Add button allows you to add a new, blank card to your current password file. It adds a new card of the type currently selected in the card category popup menu. To add a card of a different type than currently displayed, first select a different type using this menu, then press Add.



Delete Card

The Delete button allows you to delete the current card.



Update card

The Update command ensures that changes you've made in card fields are synchronized with the Web Confidential database.



Find

The Find button displays a Find dialog, which enables you to search cards. It offers two options:

Ignore Case: perform case insensitive searches. Default: on



The **File Encryption Button** switches to the “exploring view” of Web Confidential, in which you can select a file to Encrypt.



Read Help File

Opens the help file (it is in Adobe Acrobat format, i.e. a PDF file).



About

This command shows the version number of Web Confidential.

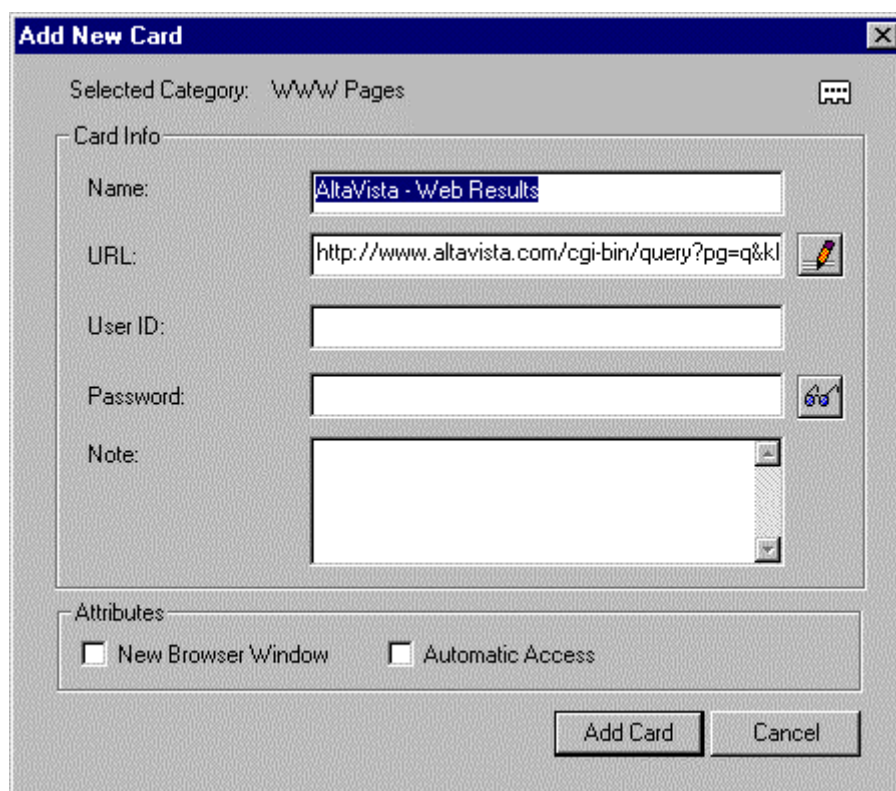
Web Confidential Statusbar

The Web Confidential Statusbar, which is located directly under the toolbar, contains the following items: the number of cards in a specific category, the card number of a selected card in a category, the total number of cards in a file (in all the categories) and on the far right is an icon which indicates whether a password file will be encrypted on save or not.

Web Confidential Card Fields

Each card in Web Confidential has four standard fields. They are labeled in various ways, depending on the type of card you have selected using the card category popup menu. In addition to the four standard fields, there is a note field for adding miscellaneous information about each card.

When you add a new card or edit an existing one the, following dialog appears:



The image shows a Windows-style dialog box titled "Add New Card". At the top, it says "Selected Category: WWW Pages" with a small menu icon to its right. Below this is a section labeled "Card Info" which contains five input fields: "Name:" (containing "AltaVista - Web Results"), "URL:" (containing "http://www.altavista.com/cgi-bin/query?pg=q&kl"), "User ID:" (empty), "Password:" (empty), and "Note:" (a large text area). To the right of the "URL:" field is a small icon of a right-pointing arrow. To the right of the "Password:" field is a small icon of a key. Below the "Card Info" section is a section labeled "Attributes" which contains two checkboxes: "New Browser Window" and "Automatic Access", both of which are currently unchecked. At the bottom right of the dialog are two buttons: "Add Card" and "Cancel".

To the right of the second field is the "Edit URL button (the "Right Arrow" icon). When you use an URL, which contains more characters than fit in the main window URL field, you may want to edit the entire URL in larger edit box in which you can see the whole URL.



To the right of the fourth field is the Eyeglasses icon. This displays the contents of the password field in a separate window.

These are the two URL attributes that you can turn on:

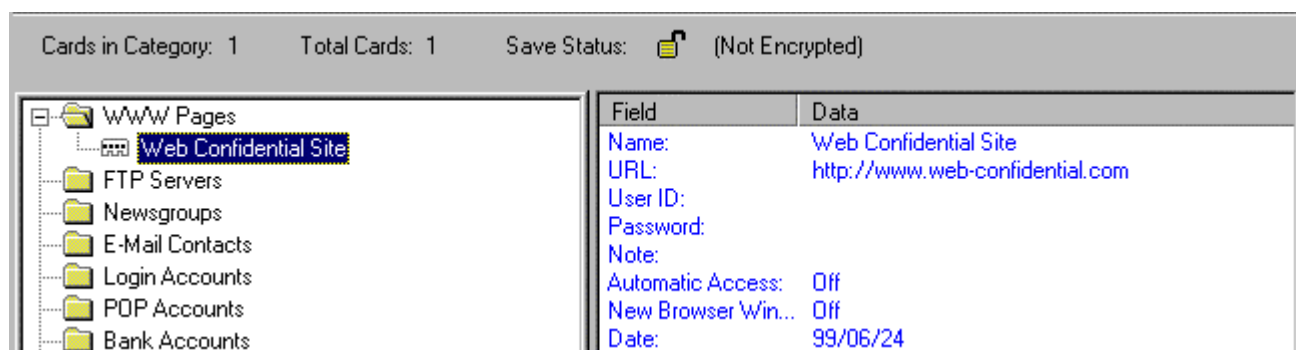
Open In New Window

If the “Open in New Window” option is turned on, this page will be opened in a new window in your Web Browser rather than an existing window. Default: off
The value can be toggled on and off by double clicking on the field.

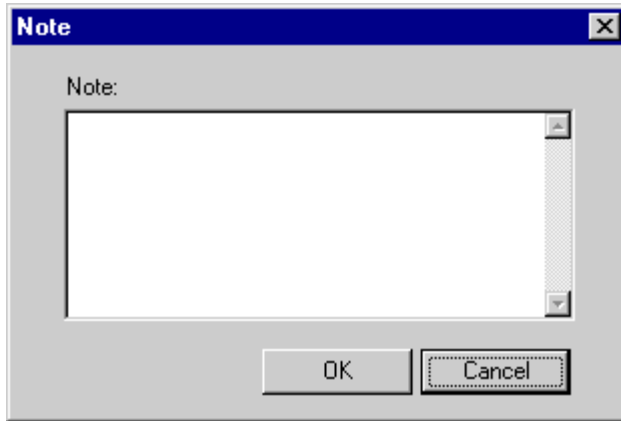
Automatic Access

If the “Automatic Access” option is turned off, Web Confidential will not include the username and password in the URL. While most password-protected pages can be automatically opened this way, a few may not, and you may find you need to enter username and password manually in a dialog box from within your Web Browser. Default: on
Again the value can be toggled on and off by double clicking on the field.

View Note Field

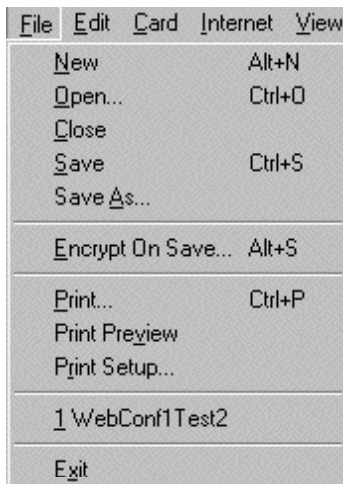


To view a note field, double click on the item “Note:” in the Card Info part of the main window, a dialog box appears which displays the contents of the note.



Web Confidential Menu Bar

The **File Menu** has the following commands:



New

The New command creates an empty password file. When you save it for the first time, you will be prompted for a distinctive filename.

Open

The Open command provides you with a file selection dialog with which you can open an existing password file from your harddisk or from a floppy disk.

Close

The Close command closes the currently active password file. If you have modified it, you will be prompted to save changes before closing it.

Save

The Save command writes the currently active password file to disk. Functionally equivalent to the Save button on the toolbar.

Save As

The Save As command enables you save the currently active password file under a different name.

Encrypt On Save

This brings up the dialog in which you enter your Encryption Password.

Print

The Print command allows you to print the currently active password file. Some options in Preferences determine what is actually printed.

Print Preview

This gives a preview of the card file you are about to print.

Print SetUp

Initiates the standard prints Setup dialog

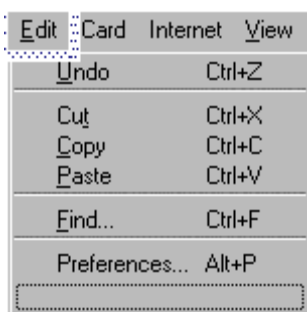
Recent File

Gives an overview of the last 4 recent files you have used.

Exit

The Exit command allows you to exit Web Confidential. If any password files are open and changes have not been saved, you will be prompted to saves changes first.

The **Edit Menu** has the following commands:



Undo – Ctrl+Z

Only implemented for text commands.

Cut – Ctrl+X

Move the currently selected text to the Clipboard.

Copy – Ctrl+C

Copy the currently selected text to the Clipboard.

Paste – Ctrl+V

Paste the contents of the Clipboard at the cursor location.

Find – Ctrl+F

The Find command displays the Find dialog which enables you to search cards. It offers two options:

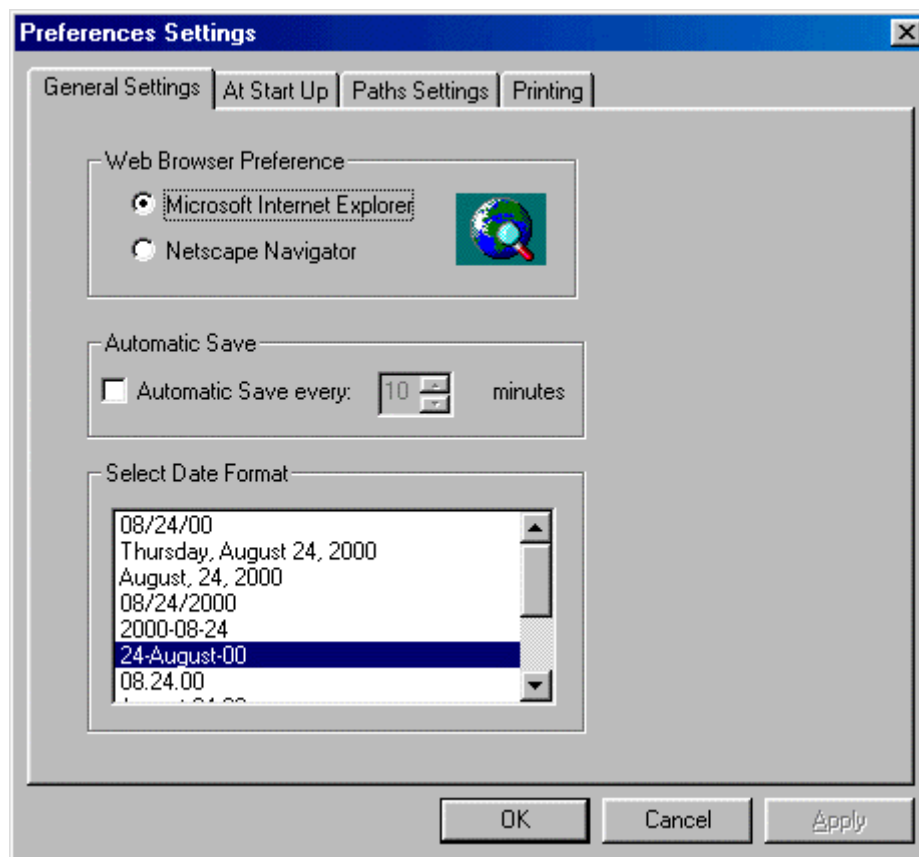
Ignore case: perform case insensitive searches. Default: on

Find Again – Ctrl+G

The Find Again command repeats previous Find operation.

Preferences

The Preferences command allows you to modify various settings used by Web Confidential. Use the Preferences tab dialog at the top of the Preferences window to select the page of settings you want to modify.



General Settings

Web Browser Preference

You can configure Web Confidential to recognize the browser you use. Default: Netscape Navigator. This allows you to have more than one browser installed on your hard disk and have Web Confidential recognize the correct one.

Automatic Save

Use the Automatic Save option to automatically save your file every 'x' minutes. Default: off.

At Startup

Automatically Open Recent Files

If the Automatically Open Recent Files is checked, Web Confidential automatically opens the last four files you have used. If a password file is encrypted, you will be prompted for the key. Default: off

Helper Applications

If the Launch Web Browser option is checked, your Web Browser will be launched at startup. Default: off

If the Launch FTP Client option is checked, your FTP program will be launched at startup. Default: off

If the Launch E-Mail Application option is checked, your E-Mail program will be launched at startup. Default: off

If the Launch Telnet Application option is checked, your Telnet program will be launched at startup. Default: off

If the Launch Newsreader option is checked, your Newsreader will be launched at startup. Default: off

These applications are only launched when the path is specified in the path settings tab dialog.

Paths Settings

In order to use the Internet applications form within Web Confidential we have to specify the paths where the specific executables can be found. This can be done quite easily and has to be done only once. Just select one of the Edit Boxes for a specific application, click on the button “Find Path” and find the location of the executable with the help of the Find Internet Application paths dialog. When you have found the location of the executable, just click OK and the path is copied in the specific Edit Box. The next time at startup Web Confidential will remember these paths and you will be able to start the applications from within Web Confidential.

Printing

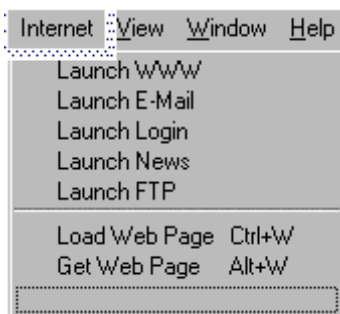
Print ATM/PIN Codes

If the Print ATM/PIN Codes option is turned on, the ATM/PIN Codes field of the corresponding cards will be included when you issue a print command. Default: off

Print Notes

If the Print Notes option is turned on, all Notes fields will be included when you issue a print command. Default: off

The **Internet Menu** has the following commands:



Launch Menu Items

The “Launch” menu items speak for themselves, each one has the effect that the specific application will be launched, provided the application exists on your hard disk and its path is set in the preferences.

WWW

The WWW command launches your Web Browser.

FTP

The FTP command launches your FTP program.

E-Mail

The E-Mail command launches your E-Mail program.

Login

The Login command launches your Telnet program.

News

The News command launches your Newsreader.

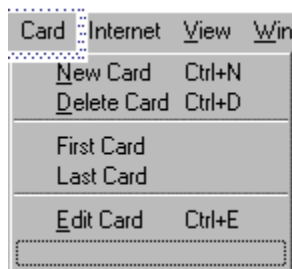
Load Web Page - Ctrl +W

This menu item is an important one of Web Confidential, it allows you to load a specific Web Page directly in your Web Browser. Select a card. Select “Load Web Page” from the menu and the Web Page will be loaded into the Web Browser, i.e. the specified Web Page will be shown in the Web Browser.

Get Web Page - Alt +W

The command Get Web Page enables you, with just one mouse click (or keystroke), to create a new card in Web Confidential, containing the name and Internet address of the current Web Page. It copies the title of the current page into the name field and copies the current URL to the URL field.

The **Card Menu** has the following commands:



New Card – Alt+N

The Add card command allows you add a new card to the currently active password file. Functionally equivalent to clicking on the Add button in the toolbar.

Delete Card – Alt+D

The Delete command allows you to delete the current card. Functionally equivalent to clicking the Delete button on the toolbar.

Next Card - Down Arrow

The Next Card command moves you to the next card in the currently active category.

Previous Card - Up Arrow

The Previous Card command moves you to the previous card in the currently active category.

First Card

The First Card command moves you to the first card in the currently active category.

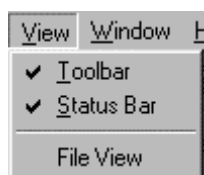
Last Card

The Last Card command moves you to the last card in the currently active category.

Update – Ctrl+U

The Update command ensures that changes you've made in card fields are synchronized with the Web Confidential database.

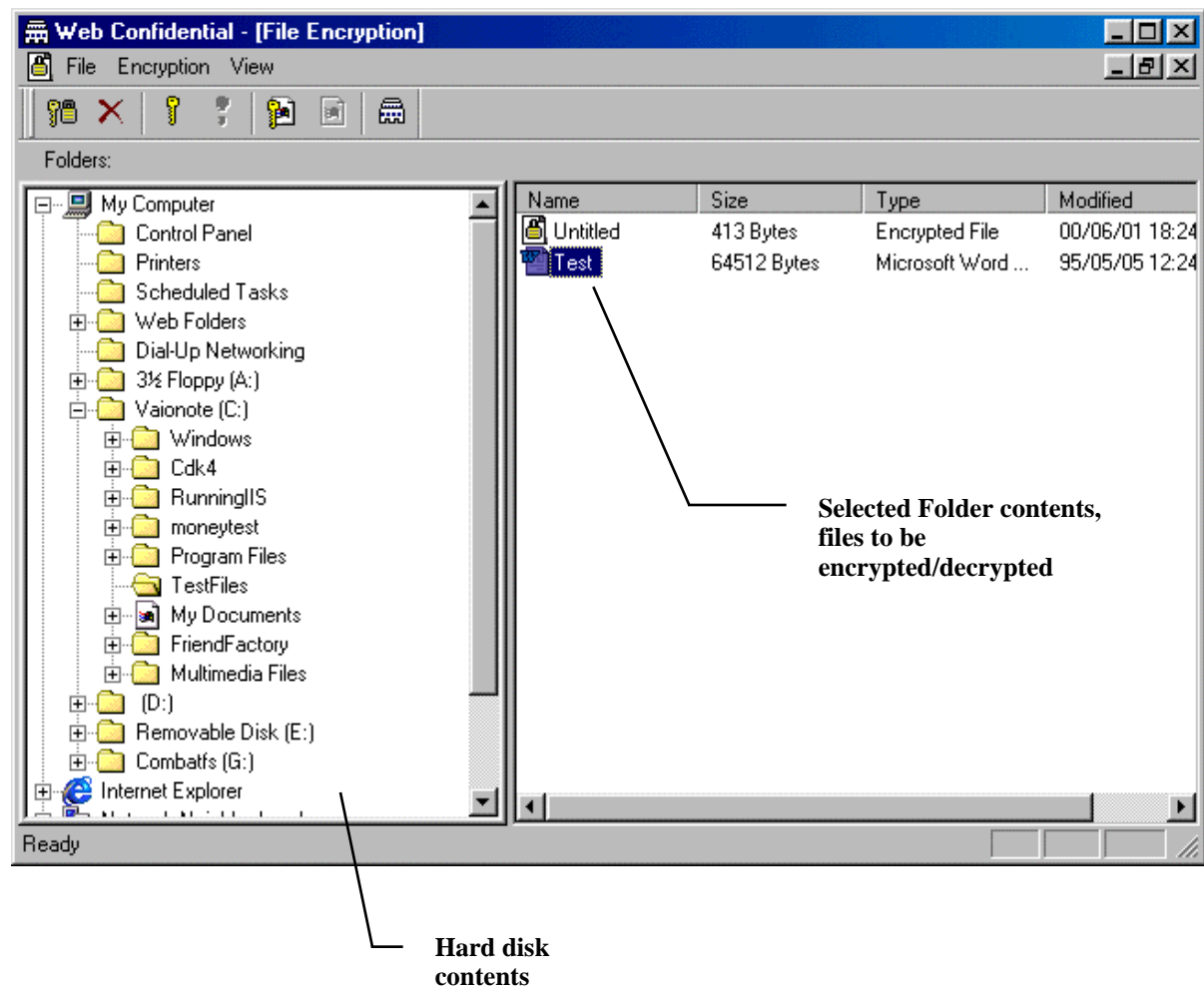
The **View Menu** has the following commands:



If you click on the File View menu item, you change Web Confidential into the File Encryption mode, in which you can encrypt any file on your hard disk.

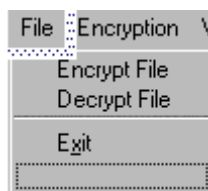
The File Encryption main window

The main window shows the user's hard disk and the contents of the selection. The user selects a file on the right side of the main window, for example, the MS Word file "Test" and then clicks on the key icon to encrypt the selected file.



The File Encryption menus

The **File** menu has the following commands:



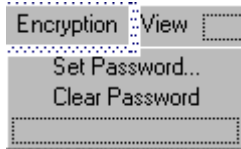
Encrypt File

This command encrypts the selected file.

Decrypt File

This command decrypts the selected file, i.e. a file which was earlier encrypted is now being decrypted to make it readable again.

The **Encryption** menu has the following commands:



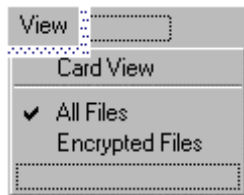
Set Password

This command sets the password, which is needed to encrypt and decrypt a file.

Clear Password

This command clears the password.

Finally the **View** menu has the following commands:



Card View

This command switches to the card view of Web Confidential, i.e. it switches to the part of the application, which manages passwords in the different categories.

All Files

This command shows all the files, which are in the selected folder on the left side of the file encryption view.

Encrypted Files

This command shows only the encrypted files in the selected folder. You can toggle between showing all the files and just showing the files, which are encrypted by the application.

The File Encryption Toolbar

The File Encryption toolbar comprises the following buttons, which offer quick access to the main features of the program. They are described from left to right.



Set Password

Sets the password for file encryption.



Clear Password

Clears the file encryption password



Encrypt File

Encrypts a selected file



Decrypt File

Decrypts a selected file.



Show Encrypted files

Show only encrypted files in the folder view



Show All Files

Show all files, encrypted and not encrypted files.



Switch to Card View

Switch to the card view part of web confidential.

Encrypting Password Files

Web Confidential allows you to protect your password file with a so-called key. A key is similar to a password. Once you have protected a password file with a key, Web Confidential will prompt you for the key each time you open this file. In addition, Web Confidential uses this key to encrypt the password file. This provides excellent security for your password file.

Encryption is a complex subject and discussion of it is beyond the scope of this document. Suffice to say that if you protect your Web Confidential password file with a key ten characters in length, it is extremely unlikely that anyone would be able to crack the code. Always create a key with mixed upper- and lowercase letters and numbers; such a key is more difficult to crack. Your key can even be a multi-word phrase (spaces are permitted). The key can be 56 characters (=448 bits) in length. To ensure that you type your key correctly, Web Confidential prompts you to enter it twice. Unprotected password files and encrypted password files have slightly different icons; an encrypted password file is recognizable by an unbroken key depicted on the icon. This is to help you verify that a password file has indeed been encrypted.

When to encrypt

Encryption is optional; Web Confidential does not require you to encrypt a password file. To help you decide whether to encrypt your file, we offer the following guidelines:

If you are the only user of your computer and it is located in your home or an office to which only you have access, you probably don't need to encrypt your password file.

If other people have access to your computer or you have Web Confidential installed on a laptop, we recommend you encrypt your password file.

Warning

If you lose or forget the key you used to encrypt your Web Confidential password file, there is no way you will be able to access the data in this file. Do not even contemplate contacting us for help. We have not designed any kind of back-door mechanism in Web Confidential to enable us to open an encrypted password file without the key. If you have lost your key, your data is gone for good; your only recourse will be to re-enter all your data in Web Confidential manually. Our advice: if you encrypt your password file, use a key that you are certain you will never forget or keep a copy of your key in a safe place.

Command Key Shortcuts

Ctrl-N	Open Password File
Ctrl-S	Save Password File
Alt-S	Encrypt On Save Dialog
Ctrl+P	Print currently active password file.
Ctrl-Z	Undo Copy\Paste action
Ctrl-X	Cut Text Selection
Ctrl-C	Copy Text selection
Ctrl-V	Paste contents of Clipboard at cursor
Ctrl-F	Find Card
Ctrl-G	Find Again
Alt-P	Open Preferences
Alt-W	Get Web Page
Ctrl-W	Load Web Page
Alt-N	New Card
Alt-U	Update Card
Up Arrow	Previous Card
Down Arrow	Next Card